



Down to Earth

"Earth science learning for all"

The Isles of Skye & Raasay

April 21-28 2022



A word from your leaders...

Chris has been taking people to Raasay for more than 40 years and both he and Colin are really looking forward to a return visit after an absence of six years. This small Hebridean isle is truly a geologist's paradise with ancient Lewisian Gneiss, Torridonian sandstone together with sediments from the Triassic and Jurassic, along with Tertiary igneous intrusions and extrusions!

Chris and Colin will be leading you around some of their favourite localities on both Skye and Raasay making use of our own minibus. For this trip, we will be spending the entire week based at the modernised and refurbished Raasay House Hotel, where home comforts and hearty food come as standard. This is one of those trips with something for everyone whether you are beginner or seasoned field geologist.

Raasay is one of those places where we have people just waiting to join us, especially since the last time we went was 2016. We are already holding a number of bookings due to previous cancellation due to Coronavirus.

Chris Darmon & Colin Schofield
Joint course Organisers/Leaders

downtoearth@geosupplies.co.uk

Getting to Raasay

Raasay is served by a regular short ferry crossing from Sconser on Skye, that takes around 30 minutes. Cars can safely be left at the ferry terminal at Sconser. There is a ferry at around 18.00 thus giving you all day to get there. If you are coming by public transport there's a Scottish Citilink coach from Glasgow to Portree that drops you at Sconser. Alternatively you can come by train to Kyle of Lochalsh and then catch the bus.

Getting Around

We will have the use of 17-seater minibus, in the capable hands of my friend and colleague Colin Schofield. You are welcome to bring your own car and use it to get around if you wish. The mileage on Raasay will be minimal and on Skye modest.

Walking

Whilst some of the terrain is rough, we do not intend doing anything particularly difficult or daunting. We'll get you as close as possible to the relevant sites and will, in almost every case, involve minimal walking distances. Everything therefore should be within the capabilities of all the party. We'll also take it at a leisurely pace. However, if at any time you wish to 'opt out' that will be fully acceptable and understood. In view of the uncertainties of the weather you are strongly advised to bring waterproofs and walking boots – particularly as you may be walking over some rough ground.

Accommodation & Food

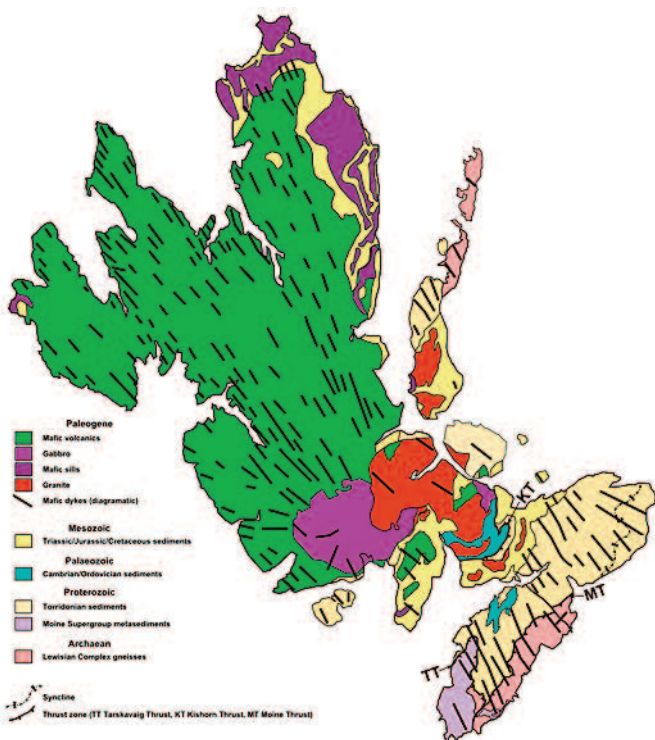
Good food and a good night's rest are important elements of our trips and we work hard to bring you the best local accommodation. On previous visits we've spent a couple of nights off the island, but this time we'll be spending all of our time based on Raasay and then make visits to Skye on a daily basis.

On Raasay we'll be staying in the newly restored and modernised Raasay House, a Jacobean mansion that's also home to an outdoor centre. It has good hotel rooms and has noted cuisine. If you are looking for something a little special on Raasay we have three seaview deluxe twin/double rooms available at an additional cost of £300.00 per person - see booking form.

En suite facilities are provided as standard at Raasay House. A hearty breakfast, 3-course evening meal and packed lunch for each field day, are all included. Single accommodation is available, but is limited and subject to a modest supplement. We are happy to help anyone looking for someone to share a twin bedded room – simply indicate on the booking form.



The Geology



This course will concentrate on the geology of Raasay, but will also include a couple of days on Skye. It almost offers a 'first to last' experience with rocks ranging in age from the Archaean of the Precambrian to the Tertiary. Considering the geology in order of age, we commence with the Lewisian Gneisses that outcrop extensively in North Raasay allowing us to see the classic scenery this rock produces. This is overlain by the thick sequence of Torridonian rocks from the late Precambrian.

Thanks to complex tectonics we can examine the Moine Schists around Kyle of Lochalsh. Cambro-Ordovician limestone will be seen on Skye. Triassic and Jurassic sediments form large parts of Raasay, the latter often highly fossiliferous, including ammonites and belemnites.

A wide variety of Tertiary igneous rocks will be seen on Skye and Raasay. Near Broadford, we'll examine marbles formed by a nearby granitic intrusion. The Moine Thrust passes through the SE part of Skye and is well worth the effort to see!

Itinerary

Although not fixed in stone, the following is a guide to what we should be able to see and do:-

- Lewisian and Torridonian rocks of North Raasay
- Moine rocks of the Kyle of Lochalsh area
- Triassic and Jurassic sediments of Raasay
- Moine Thrust and sediments of SE Skye
- Granites and marbles of the Broadford area
- A visit to Elgol and the beautiful view northwards to the Cullins
- The amazing rocks of Brochel Castle, Raasay
- Optional mapping exercise on Raasay

Cost

Several different room types are available. For 2 people sharing a double or twin room, the cost of the 7-night tour will be £1495.00 per person. Two twin rooms with private facilities are available at £1295.00 per person. For single occupancy add £250.00. Two seaview double de-luxe rooms, with lounges are priced at £1795.00 per person.

If you are willing to share a twin bedded room, with someone of the same sex, please indicate on the form and we'll see what we can do.



What's included in the cost?

- The services of Chris Darmon and Colin Schofield as tutors who will be available to you at all reasonable times
- Accommodation and meals as specified in the brochure
- Use of the minibus and ferry fares to and from Raasay
- Admission to any museums or attractions visited as a group.

What's excluded from the cost?

- The cost of travel between your home and Sconser and return
- Travel insurance
- Incidental expenses
- Lunchtime food on the final day

Insurance

Everyone booking a place and paying a deposit is strongly advised to take out holiday insurance. This can cover you against loss of money in the event of your cancellation for health reasons etc. Cover is often included in with your credit card or bank account.

Booking



Your booking will be confirmed upon receipt of either a deposit of £300.00 per person or the full payment and a completed booking form. The balance will be payable not later than February 28th 2022.

This trip already has sufficient bookings to run.

Your money...

Upon receipt, all monies paid for these trips are placed in a specific 'client trust account' where it cannot be drawn by us until after completion of the tour. This is in accordance with EU Directives and ensures that your money is safe in the unlikely event of corporate failure by Geo Supplies.

What happens next?

As soon as we are in a position of confirming that the trip will run - we will let you know. You will then be free to start making your own travel plans and to take advantage of any early deals on train tickets.

Please don't make any such arrangements until we have been in touch with you.

Any Questions?

Please ring Chris Darmon on 0114 2455746 or email: downtoearth@geosupplies.co.uk

if you have any questions or queries. I'll do my best to help you.

Further information can be found in "Residential Field Trips 2022" which can be found on our website: www.geosupplies.co.uk



**If you have any questions or queries - contact Chris Darmon as follows:-
Email: downtoearth@geosupplies.co.uk • Tel: 0114 245 5746 • FAX: 0114 240 3405**