



## Introduction & timetable

### KEY INFORMATION

<b>COURSE TITLE:</b>	Ice Ages - a 7-week live Zoom based course
<b>LEVEL:</b>	The course is designed for anyone interested in learning more about ice ages throughout geological time, including what causes them, their effects and the landforms they produce.
<b>DATES:</b>	The course begins the week commencing October 18, with Zoom sessions at 2pm on Tuesdays and 7pm Thursdays (you choose)
<b>DELIVERY:</b>	Course participants can access supporting materials in print form, or by Moodle and Email. Printed papers cost £20.00 extra.
<b>COURSE TUTOR:</b>	Eileen Fraser assisted by Colin Schofield
<b>CONTACT:</b>	email: <a href="mailto:downtoearth@geosupplies.co.uk">downtoearth@geosupplies.co.uk</a> or tel: 0114 245 5746

### WELCOME TO THE LEARNING ZONE...

We welcome everyone to our **Down to Earth learning zone**, whether this is your first time, or you are a regular! You'll be joining a community of learners across the UK who will come together on a weekly basis in Autumn and Winter to discover more about our fascinating subject. We provide a relaxed learning environment in which we can all learn both from the tutor and each other. We'll be providing weekly materials that will lead you to find out more, doing your own bit of research on the internet, or even searching your own memory and sharing what you find with others. Weekly live Zoom meeting on Tuesdays at 2pm or Thursdays at 7pm are the heart of this learning experience. (You choose which session to attend week by week and you don't have to tell us.)

Eileen is a geologist with experience in teaching adults. For many years she was a highly respected Open University tutor. She now runs her own U3A group in her home town of Congleton and runs local field trips. She has been working on the Down to Earth team ever since we began our distance learning programme. She will be supported by Colin Schofield; a geomorphologist, who not only handles the technical side of Zoom and the administration, but is also an integral part of the learning experience as he adds learning materials to the Zoom sessions. He will also be your first point of contact.

**To protect our materials, we must ask you to agree not to share them with anyone not enrolled on the course by any means, including email. This is a condition of you enrolling on this course.**

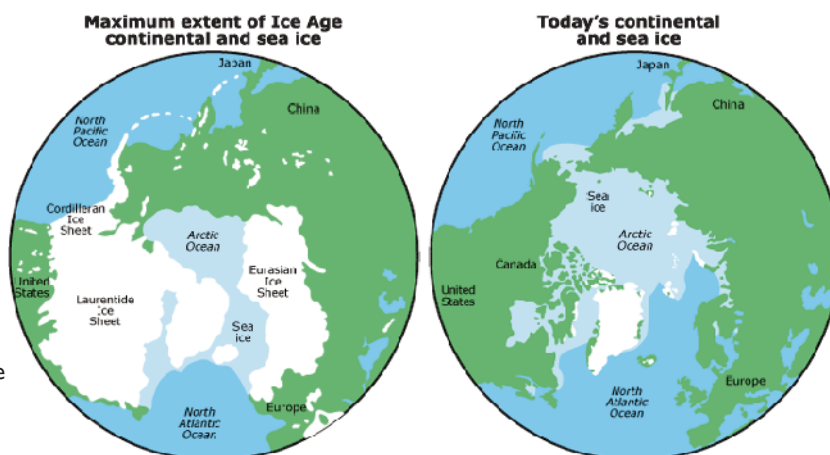
### INTRODUCTION TO THE COURSE

This course will examine the theories about how the Earth's climate has swung regularly from warm to cold and back again many times throughout the geological record. It will look at how we gather evidence for climate change and the features that are left behind in the landscape.

### COURSE CONTENT

Below is an outline of the content of each of the Units that will be presented week by week.

- **Introduction** – a general look at the history behind the Ice Ages and the people who contributed to this knowledge and the evidence we use such as ice cores.
- **Astronomical Theory** – Milankovitch cycles and cycles over the geological history of the Earth.
- **Theory of glaciers and ice sheets** – a bit of geography for a change; before we look at the Ice Ages we need to understand how these are formed.
- **Major Ice Ages over geological history** - including something on the Carbonate Compensation depths, proxy climate indicators and new theories on the carbonate-silicon cycle.
- **Pleistocene Ice Age** - how it affected Britain and the Older and Younger Dryas and the Last Glacial Maximum around the **world**.



- **The Quaternary Ice Age, the Medieval warming Period and the Little Ice Age** - and some oddities associated with Ice Ages such as Heinrich and Bond events.

- **The legacy left behind** – features we find in the landscape today and thoughts on future Ice Ages.

### PRACTICAL POINTS

- To take part in this course, you'll need a computer, iphone or tablet with access to the internet. You'll also need a valid email address - please supply this at the time of enrolment.
- Additional background material will be available as pdf files, or can be supplied in printed form by mail. A broadband connection would be very helpful, but is not essential.
- To access Moodle, Colin will give you some simple instructions and a password.
- To take part in the live Zoom presentations, you'll obviously need a camera and microphone.
- Shortly before the course begins you'll be sent the Zoom login and password which will be constant throughout the course.

### THE COST

The cost of this course is £35.00 per person (or £50.00 for two people studying together). If you would like to have the background materials printed and mailed to you, this is an extra £20.00.

### HOW TO ENROL

You can enrol by visiting our website and entering the online shop - look under courses - and payment can be made using a wide variety of cards.

***www.geosupplies.co.uk***  
***or you can ring us on 0114 2455746***

You can also send a cheque to the following address (made payable to "Geo Supplies Ltd"):-

***Geo Supplies Ltd., 49 Station Road, Chapeltown,  
 Sheffield, S35 2XE***

### LOOKING FOR HELP OR ADVICE?

If you have any queries, please don't hesitate to contact the Colin Schofield by email:-

***downtoearthgeology@outlook.com or you can call: 07896 524016***

For administrative queries, or to enrol, email:

***downtoearth@geosupplies.co.uk or you can call: 0114 245 57846***

